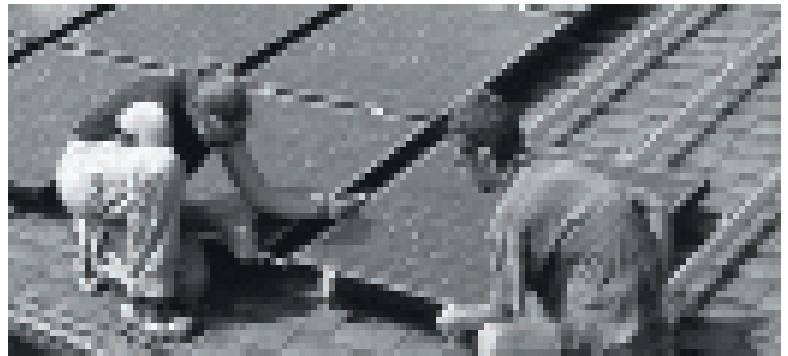


Unirac SolarMount Top-Mounting Sizing

Clamp sizes & rail set lengths

Use this table to determine the size of top mounting clamps for your modules and the length of the rails required for your array. When sizing is complete, rails, clamps, splices, and L-feet may be ordered in kits that contain just the right quantities for a given installation or in bulk packaging (Pro-Paks). See pages 39 to 42 for pricing. All Unirac components have a 10-year product warranty and a 5-year finish warranty.



Rail Length Sizing - Top Mounts													
Module brand and model		Clamp size	Rail length in inches, by number of modules per row										
			2	3	4	5	6	7	8	9	10	11	12
AEE Solar	AE-80HE	D	48	72	96	120	144	156	180	204	226	252	264
BP Solar	BP380, BP485	E	48	72	96	120	144	156	180	192	216	240	252
	BP3125	E	60	96	120	144	168	204	226	252	288	312	336
Evergreen	BP3150, 3160, 4160, 4170, 4175,	E	72	106	132	168	204	240	264	300	324	360	396
	ES-A-200, ES-A-205, ES-A-210	F	84	120	156	204	240	276	312	360	396		
Kyocera	ES170, ES180, ES190, ES195	K	84	120	156	204	240	276	312	360	396		
	KD135GX-LP	C	60	84	120	144	168	192	216	252	276	300	324
Mitsubishi	KD180GX-LP, KD205GX-LP	C	84	132	168	204	252	288	324	372	408		
	UE125MF5N	F	60	84	120	144	168	192	216	240	276	300	324
REC Solar	MF165EB4, 170EB4	F	72	106	132	168	204	240	264	300	336	360	396
	UD185MF5	F	72	106	144	180	216	240	276	312	348	384	420
Sanyo	SCM-220	J	84	132	168	204	252	288	324	372	408		
Sharp Solar	HIT-190, 200, 205, 210	H	84	120	156	192	226	264	300	336	372	408	
	NE-80U1	C	48	72	96	120	144	156	180	204	226	252	276
	ND-L3EJE (123 watt)	F	60	84	120	144	168	192	226	252	276	300	336
	ND-167U1	G	84	132	168	216	252	288	336	372	408		
	NE-175U1, NE-170U1	F	72	106	144	180	204	240	276	312	348	372	408
SolarWorld	ND-200U1, ND-208U1, ND208U1F	F	84	132	168	216	252	288	336	372	408		
	SQ80, SQ85	C	48	72	96	120	144	156	180	204	226	252	264
SunPower	SW165/175 mono	C	72	106	144	168	204	240	276	300	336	372	408
	SPR90, 95	F	48	72	96	120	144	156	180	204	226	252	264
Suntech	SPR200, 210, 215, 220	F	72	106	132	168	204	240	264	300	336	360	396
	STP110-24Ab, STP175-24Ab1	C	72	106	144	168	204	240	276	300	336	372	396



1155 Redway Drive • PO Box 339 • Redway, CA 95560
 707-923-2277 • 707-923-3009 fax
sales@eesolar.com • www.eesolar.com